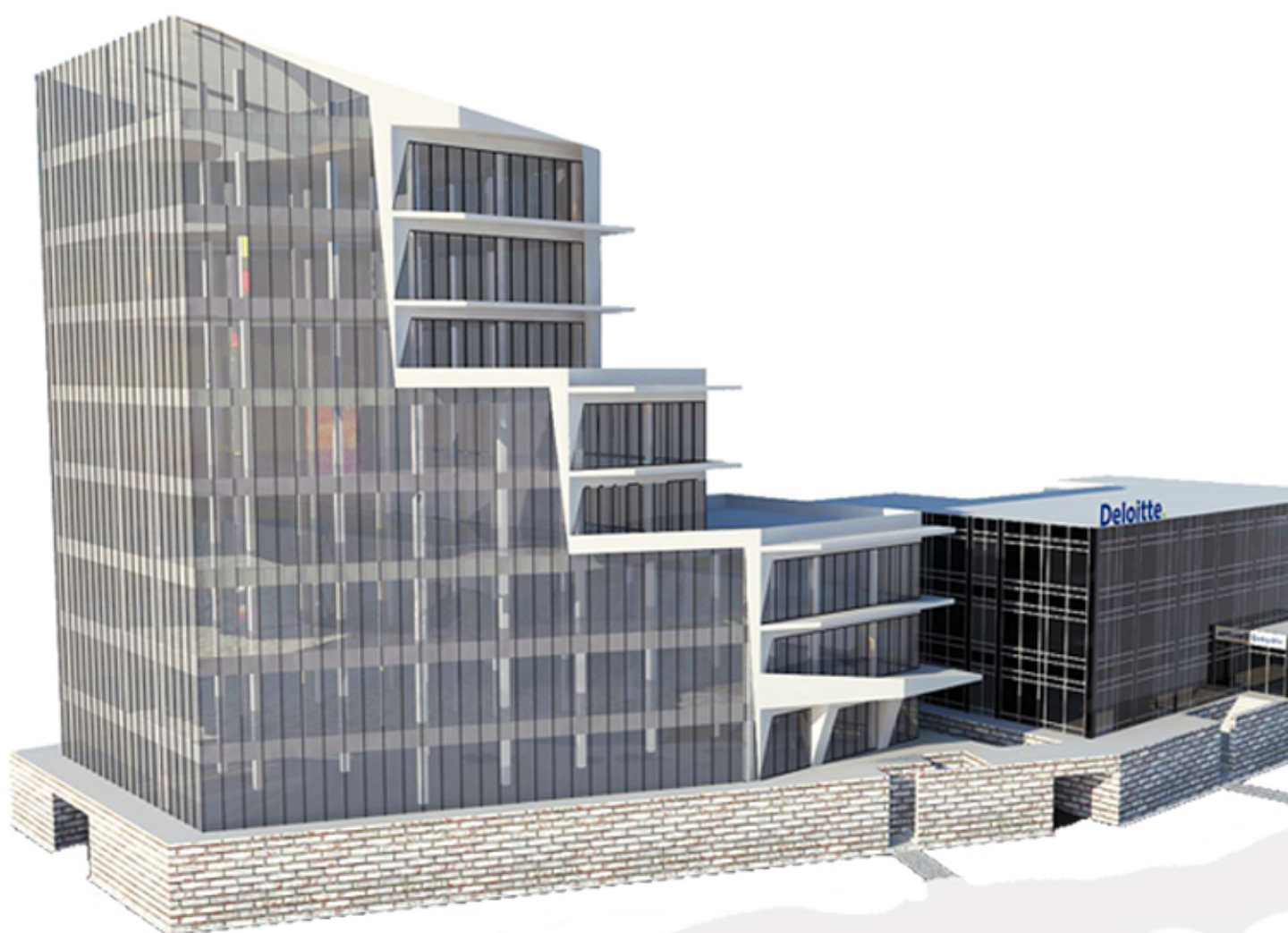


LEED COMFORT LUXURY VISIBILITY FLEXIBILITY

DREM

The Cliff

At the Juliana Bridge Curaçao



Introduction

The Cliff

DREM Development is proud to announce their prime luxury office tower development on the Island of Curacao, The Cliff.

The Cliff is intended to become the crown landmark building in the row of office buildings located next to Curacaos beautiful Juliana Bridge.

The Cliff is situated on top of the highest and farthest point of the Ararat Cliff in view of every point in the historic city and harbor of Willemstad.

The towers design was intended to complement the edges of the cliff and levels of the rock formation it is situated on.

The Glass façades give magnificent views of the city in all directions, over the entrance of the Anabay and gazes down upon the ships visiting the harbor.

It will be Curacaos highest tower featuring a sky lounge and sky deck, adding a unique and one of a kind experience and allure to our beautiful island.

The tower will be illuminated to enrich Curacaos night sky during the evening. The Cliff will be a beacon showcasing the beautiful city of Willemstad and its industry.

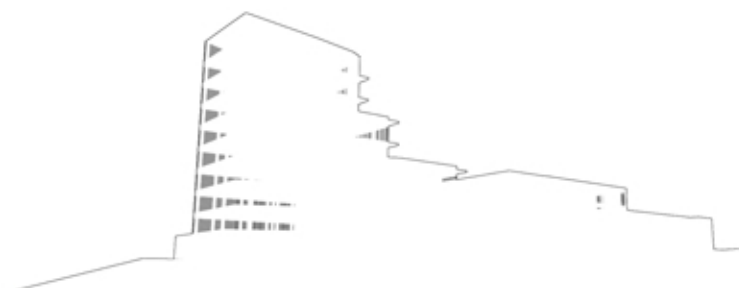
The Sky lounge on the Penthouse level will be an ideal place for semi casual business encounters not intended for the boardroom. It strives to be a lovely setting for getting to know one another on a more informal basis whilst dining or having a drink on the Cliffs breathtaking penthouse floor.

Each floor will have unique features and can be combined and fitted out in several ways to meet your company's specific needs.

An office is a place to create and produce in which you develop your business and one's self as a person. Developing spaces where our clients' experiences are enriched and radiate success is what we strive for.

Join us in this opportunity to house your business in your own executive office suite on this premier location.

From the DREM Development Team



Building Amenities

The smartest in its class

The Cliff is intended to showcase innovations of the built environment, be the best in its class and match the performance of its metropolitan counterparts. The Cliff will contain web-enabled technology, smart systems and sensors, and integration across different services and amenities. The Cliff will become the island's most intelligent buildings so its tenants can focus on their work instead of maintenance and increase their efficiency.



Modern, sustainable, efficient luxury

The building will have marble, granite and other nature stone and wood finishes on the interiors. The facades will be made out of the highest insulation low E glazing and aluminum framing and panels to ensure maximum climate comfort and sustainability. The building will contain 2 intelligent elevator systems and high grade IoT security for access, monitoring and alerts. DREM is a proud partner of Maars Intelligent living wall solutions to be able to provide integrated smart partition systems to our tenants which can be connected to the building's network.



Other Amenities and Services

Main lobby with secretary and barista. Multiple terraces, Restaurant and sky lounge with sky deck. Parking garage with over 100 covered, secure spots connected to the IoT to check availability. Building cleaning and maintenance



Location

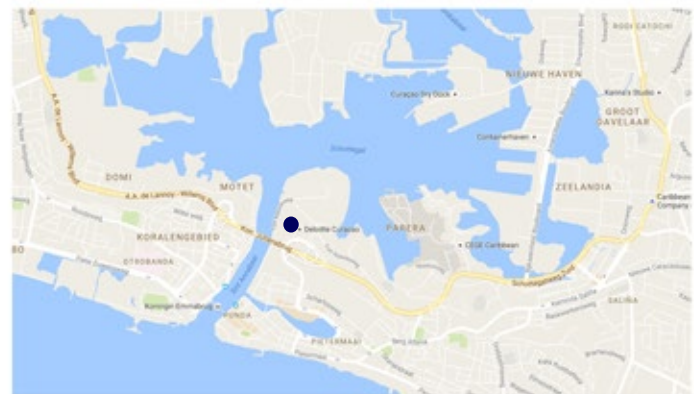
Curacao

The project is located on the Island of Curacao part of the Dutch Kingdom and European country overseas. With a diversified Economy dependent on the harbor, refinery, financial sector and tourism Curacao has proven to be economically stable during multiple cycles. The island is located outside the hurricane belt.



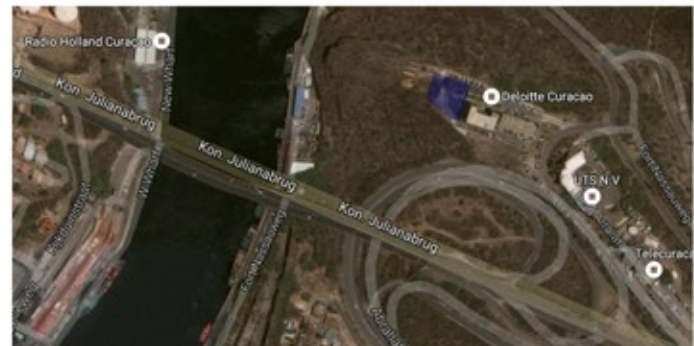
Juliana Bridge and ring road prime spot

The key aspect of this project is the visibility, being seen and projecting a strong image. Our tenants corporate identity is important to us. This project place you inside the financial heart of Curacao besides the bridge visible from the ring road. The project is neighboured by multiple corporates such as UTS, Deloitte, The ministry of VVRP and consulates.



Accessibility and Ararat

The quality of the plot also lies in having 2 smaller roads crossing next to it leading slow and fast traffic towards the ring road and bridge, combining the best of both. Ararat is the rock formation the office complex is located on which is surrounded by nature in the form of local vegetation and the harbor waters



Location

Corporate and international presence

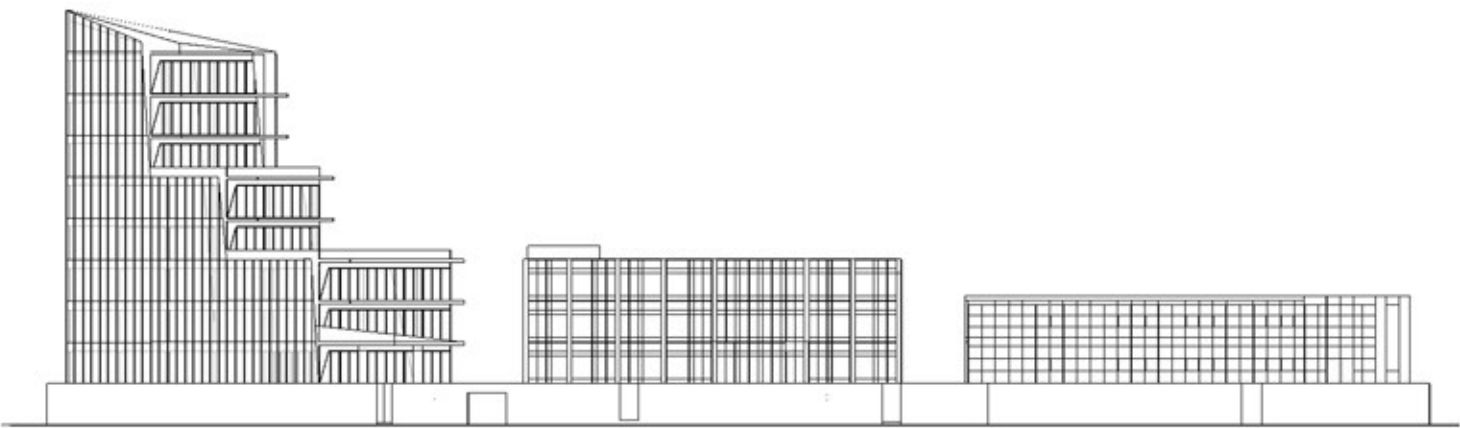


Impression of the popular lot at eye level



Building

Specifications

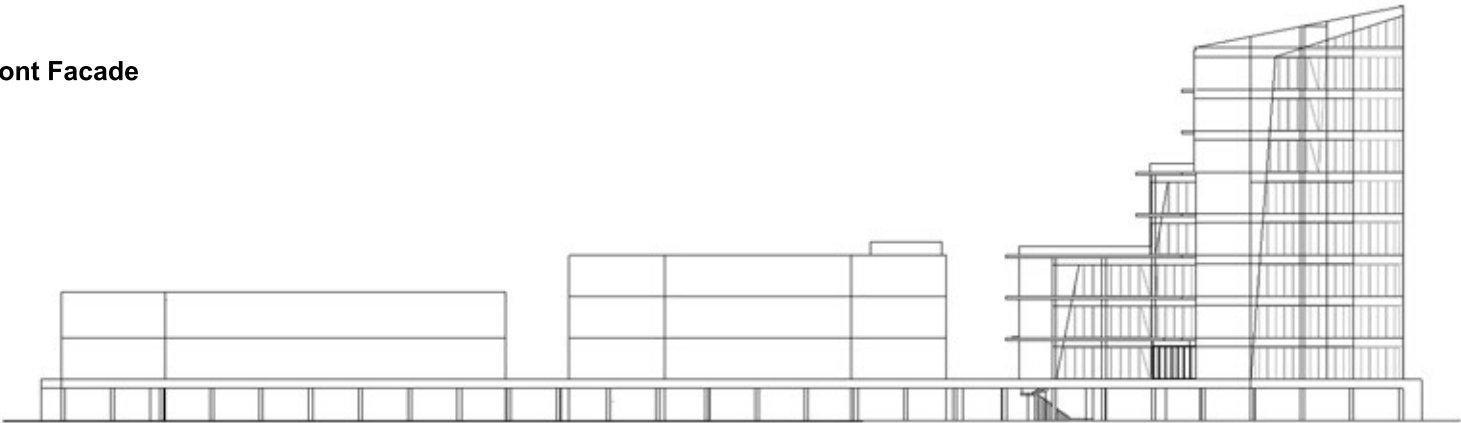


Phase 3

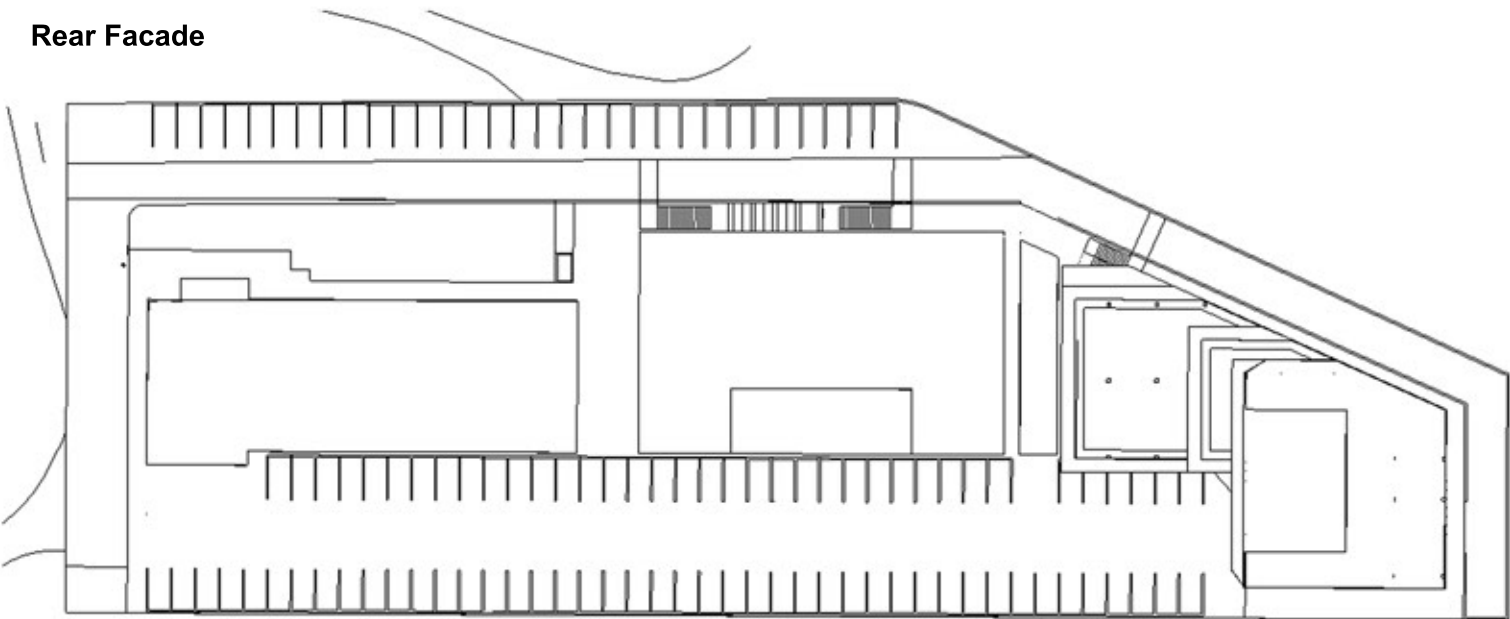
Phase 2

Phase 1

Front Facade



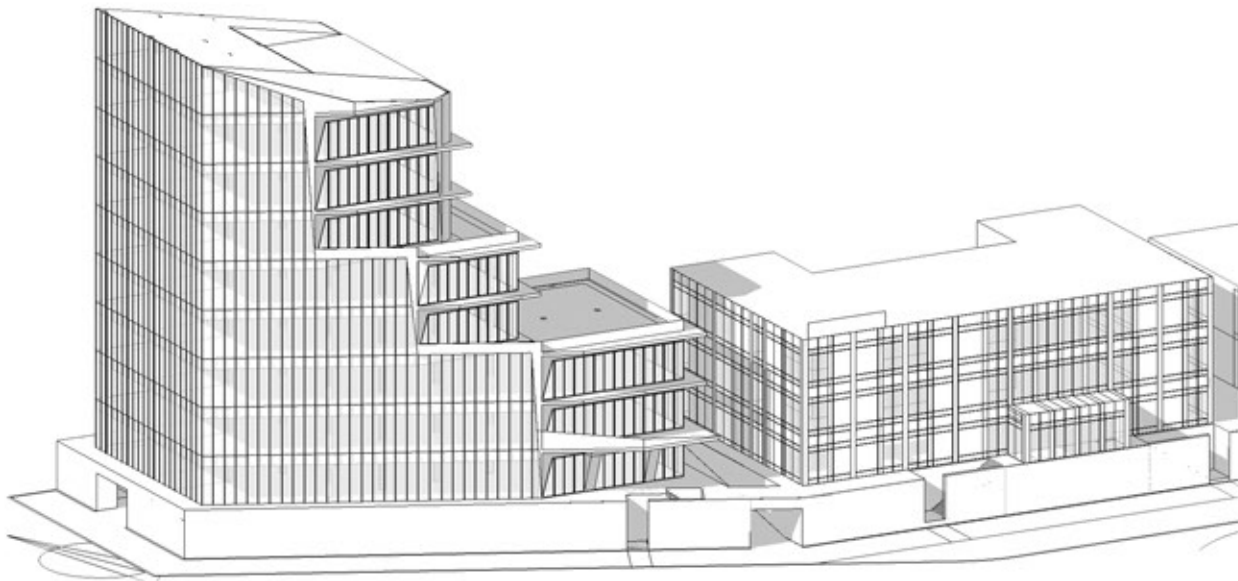
Rear Facade



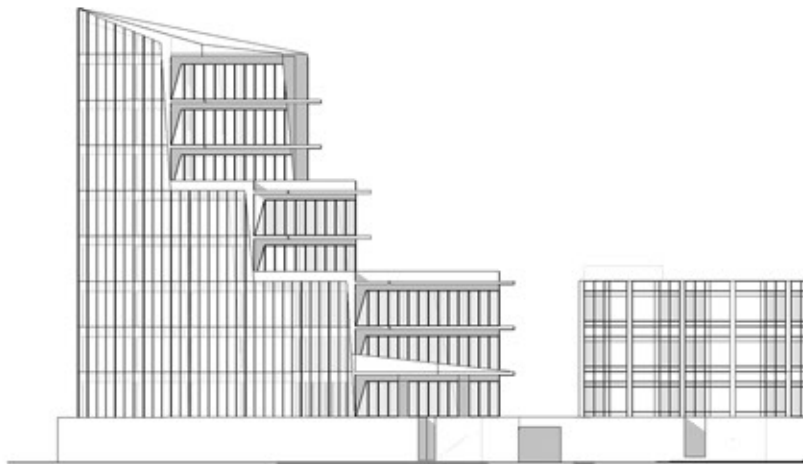
Top View



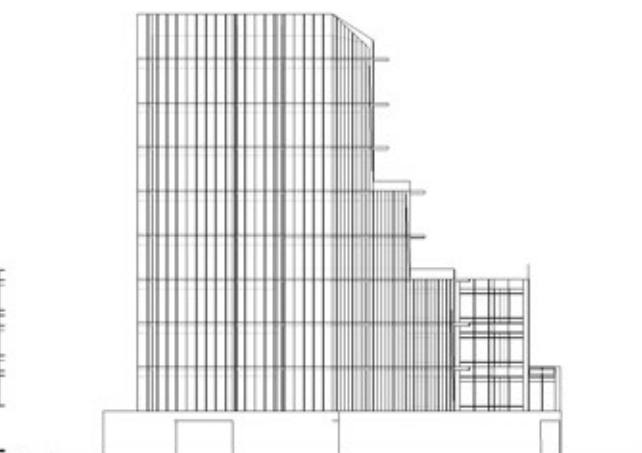
Building



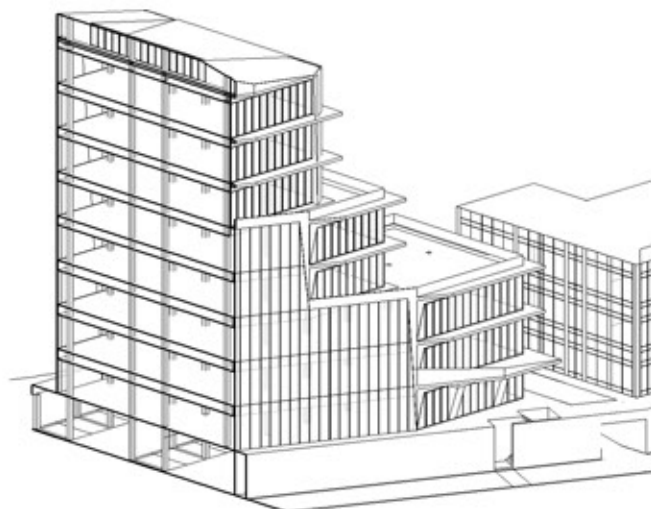
Perspective



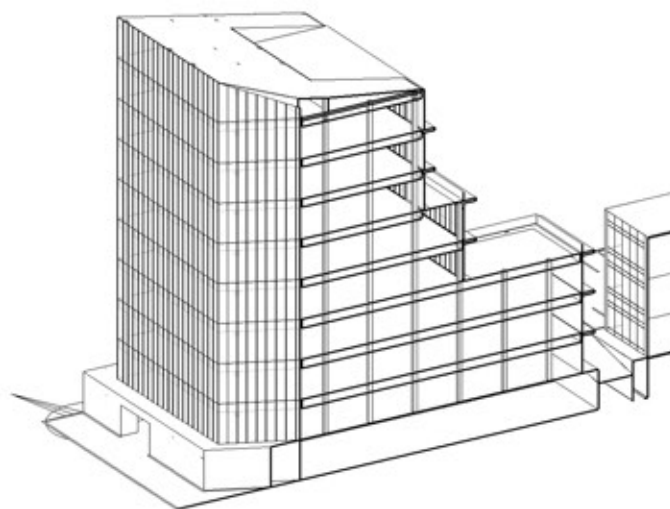
Bridge Side



Annabay Side



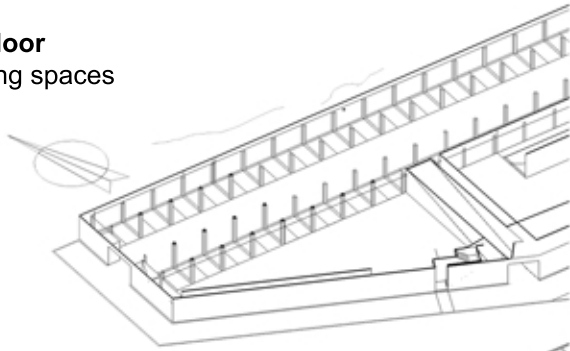
Width Section



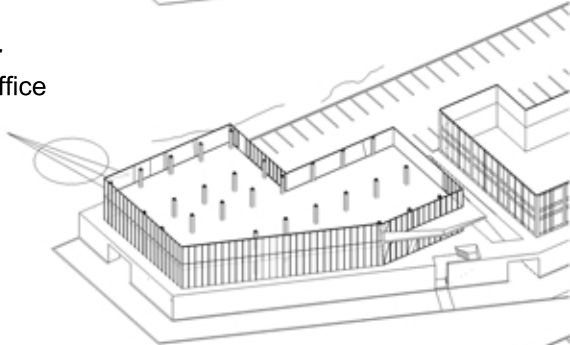
Length Section

Building Contents

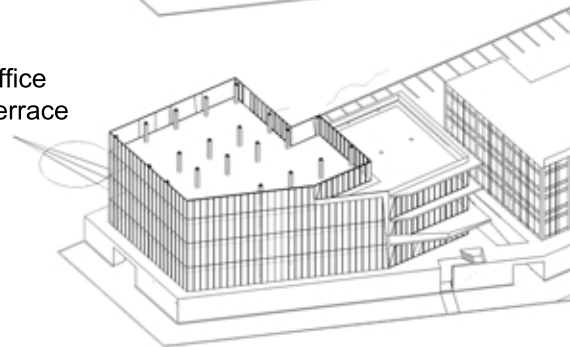
Parking floor
150 Parking spaces



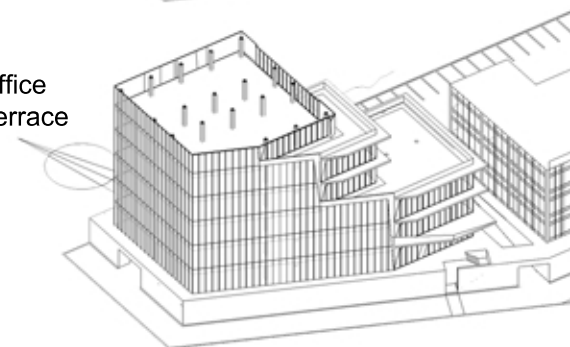
2nd Floor
900 m2 Office



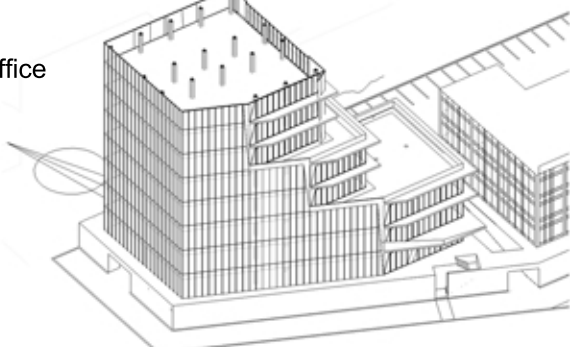
4th Floor
620 m2 Office
150 m2 Terrace



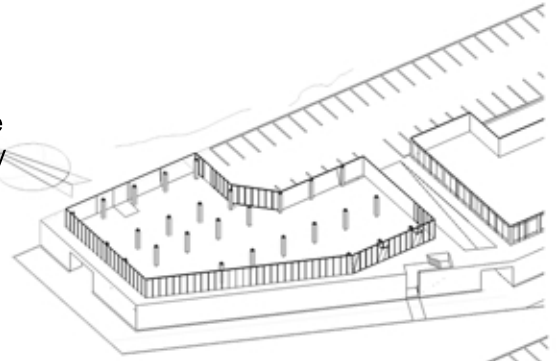
6th Floor
500 m2 Office
100 m2 Terrace



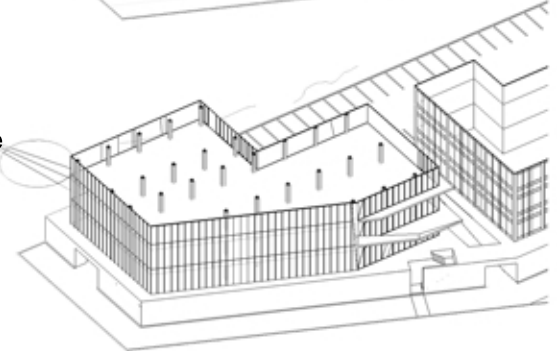
8th Floor
500 m2 Office



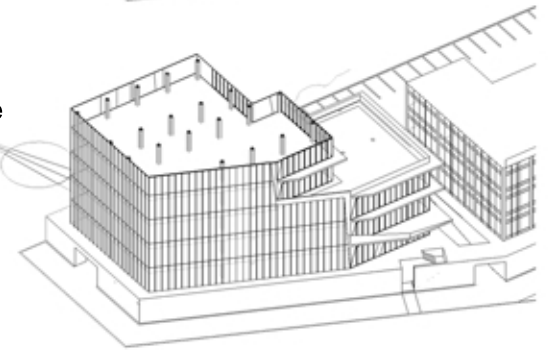
First floor
850 m2 Office
50 m2 Lobby



3rd Floor
900 m2 Office



5th Floor
620 m2 Office



7th Floor
500 m2 Office



9th Floor
250 m2 Penthouse
200 m2 Terrace

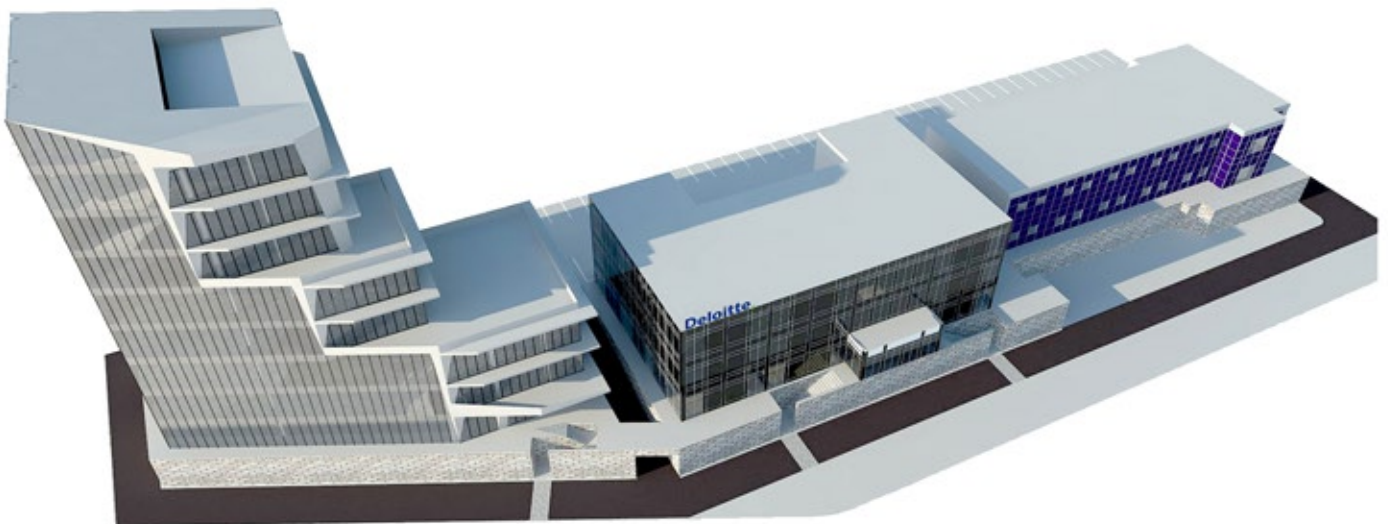


Building views

The white facade edges reflect the edges of the cliffs rock formations



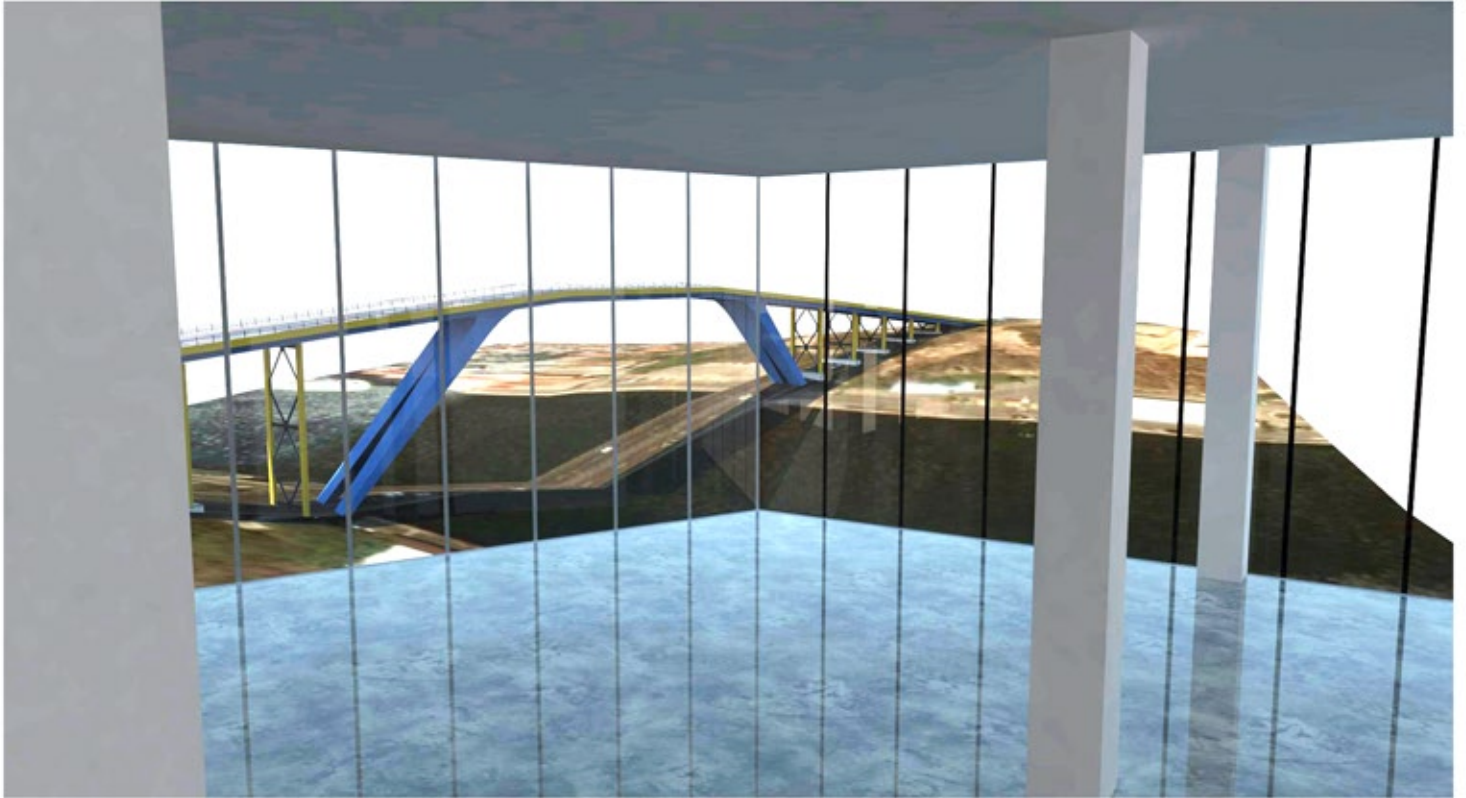
The Bridge View Office complex has a parking garage deck accesible through 2 ramps



The road curves along the building into the entrance of the parking garage

Building views

Panoramic views over the harbour from your office



Outside terraces for (in)formal meetings, events or lunches



Building views

The Side and rear fins of the building are intended to shade the terraces

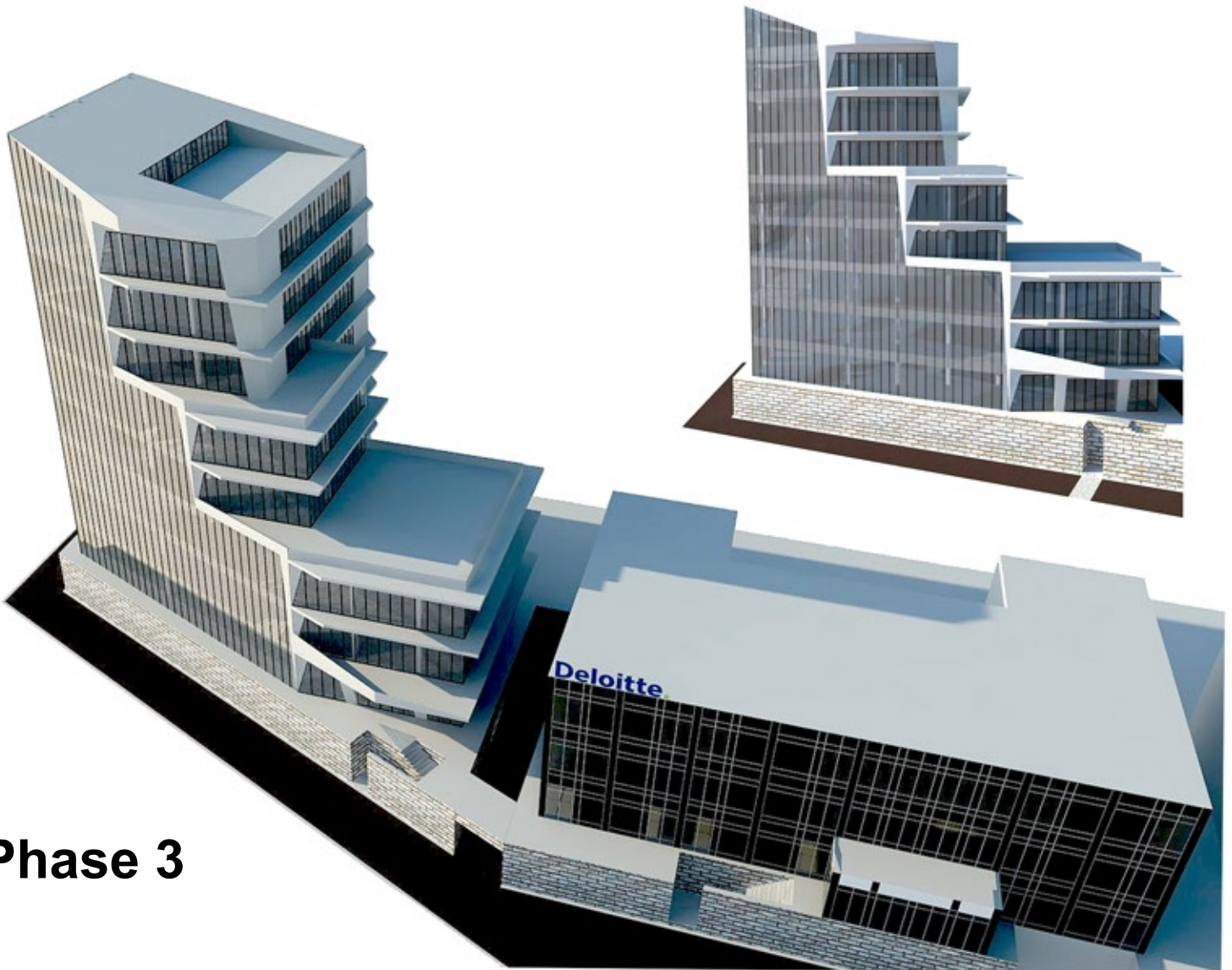


The Entrance is located under an elevated wing on the first floor to accentuate the lobby



Bridge View

Neighbours Phase 1 and Phase 2



Phase 3